

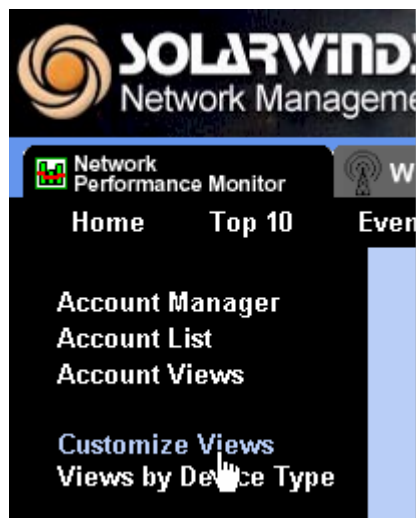
## Creating a Multi-Interface Statistics View

This document provides step by step instructions for creating a View that contains Gauges and/or Charts for multiple Interfaces. Let's get started.

1. Login to the Orion website with an account that has Administrative Rights.
2. Click on the **Admin** button in the Orion Menu Bar.



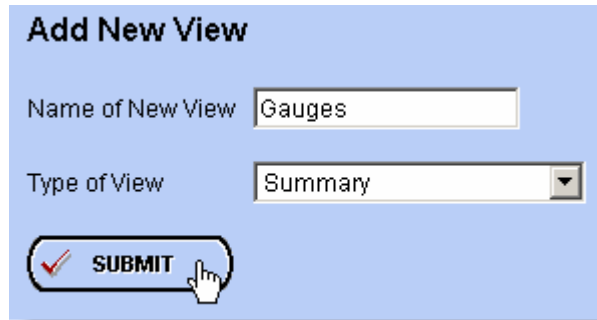
3. Click **Customize Views**.



4. Click on the **Add** button to create a new View.



5. Give the View a Name, select **Summary** as the Type of View, and then click the **Submit** button.

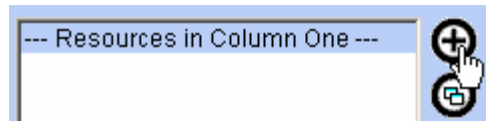


**Add New View**

Name of New View

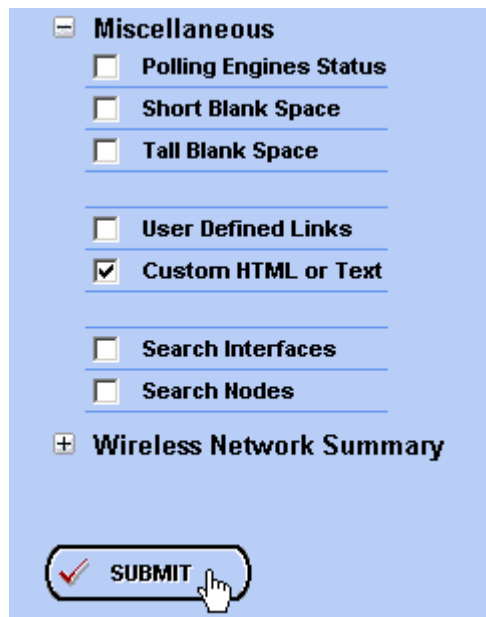
Type of View

6. Click on the **Plus Sign (+)** button to add Resources to the View.



--- Resources in Column One ---

7. Select the **Custom HTML or Text** Resource from the **Miscellaneous** group, and then click the **Submit** button.




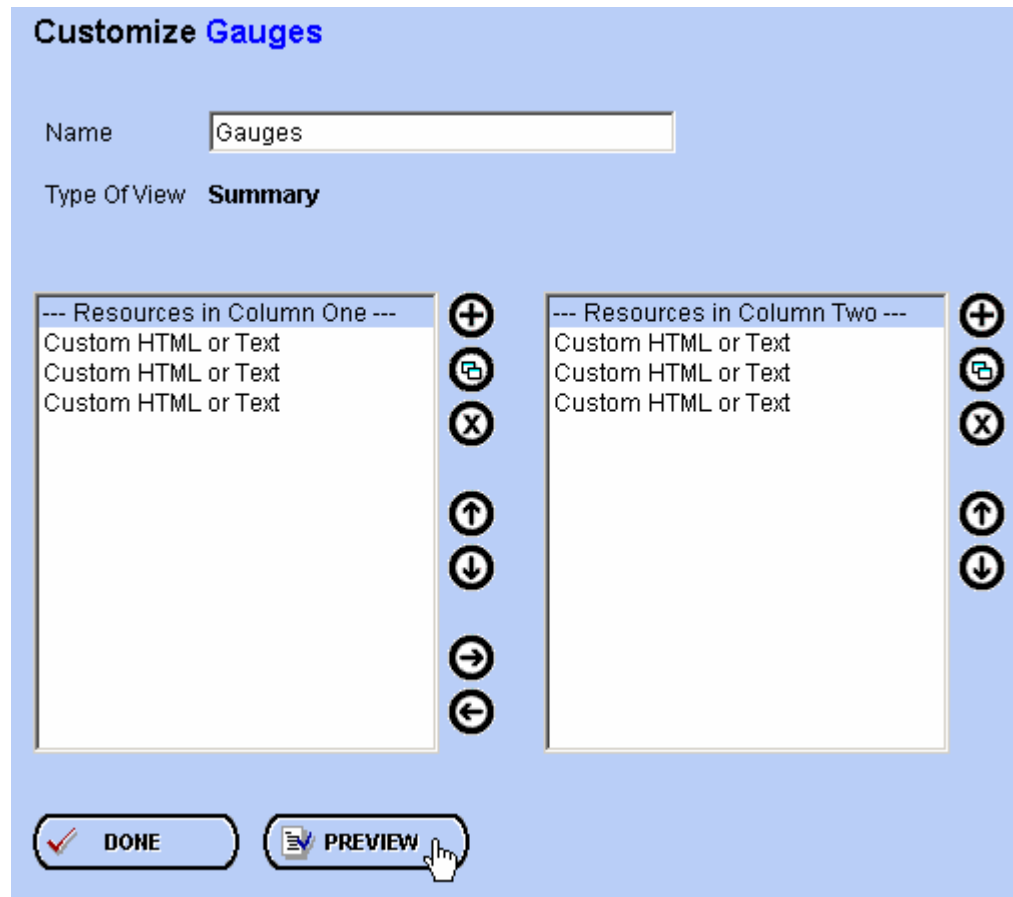
**Miscellaneous**

- Polling Engines Status
- Short Blank Space
- Tall Blank Space
- User Defined Links
- Custom HTML or Text
- Search Interfaces
- Search Nodes

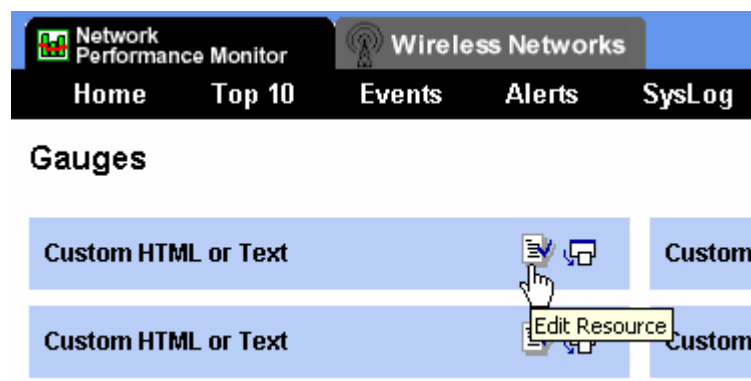
**Wireless Network Summary**

8. Follow steps 6 and 7 to add additional Resources to the View. In this example, the **Custom HTML or Text** Resource has been added six times (three times to each column) giving the **Gauges** View six unique Interface Gauges.

The **Clone Resource** button  can also be used to add the same Resource and save time. When finished, click the **Preview** button.



9. Click the **Edit Resource** button in the upper-right hand corner of the first Resource.



10. Give the Resource a Title and Subtitle.

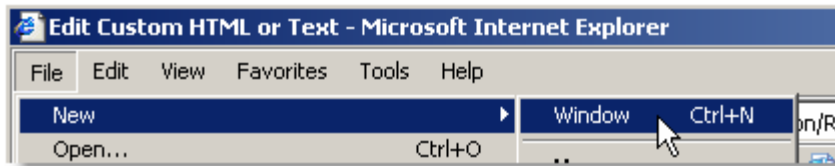
**Edit Custom HTML or Text**

Title  
STRIDER - Intel(R) PRO/100

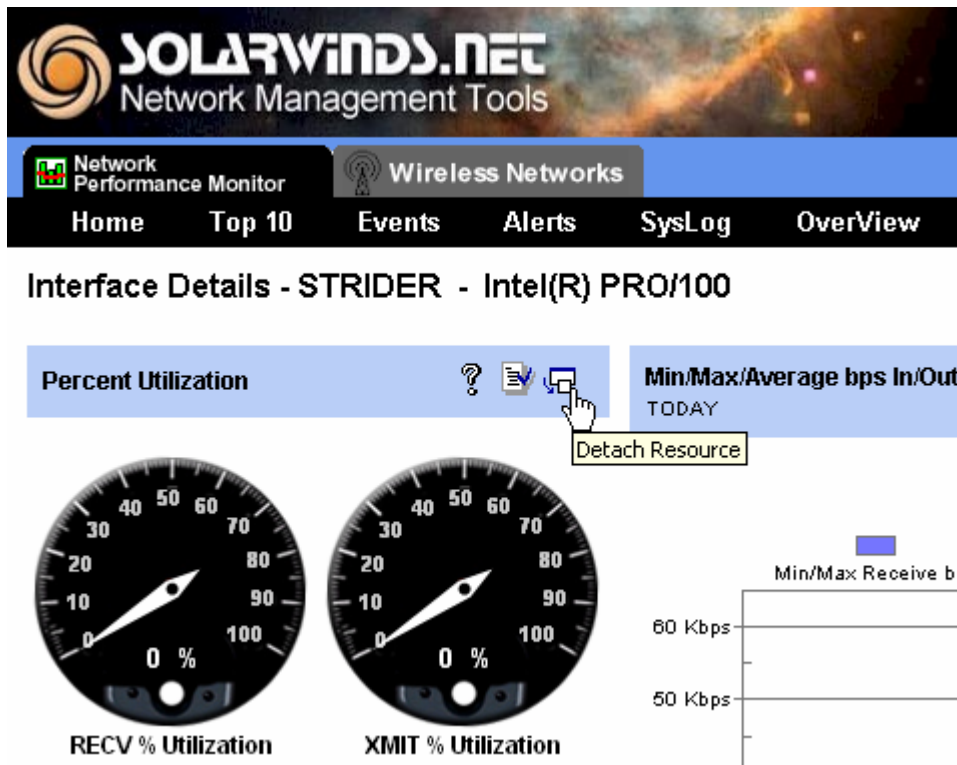
Sub Title  
Percent Utilization

Raw HTML

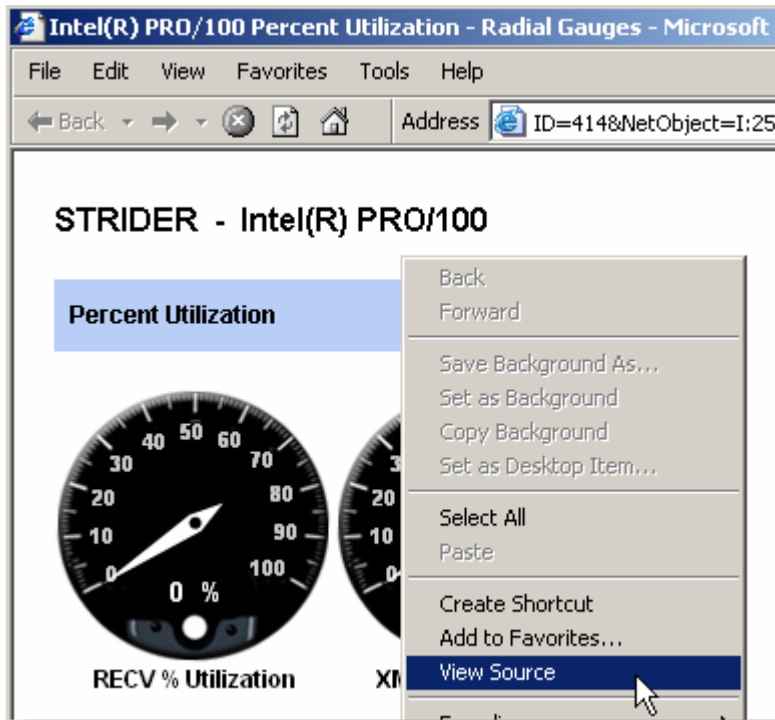
11. Keep the current window open, and click **File** → **New** → **Window** to open a new browser.



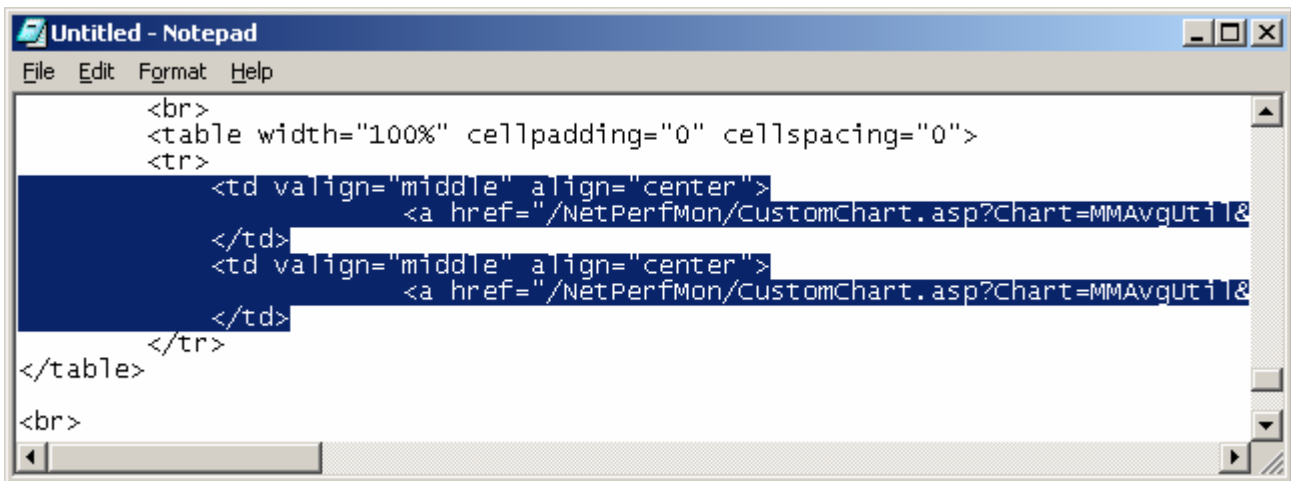
12. Browse to the **Interface Details** View for the Interface that is to be added the first Gauge within the Custom HTML Resource. Click on the **Detach Resource** button in the upper right-hand corner of the Resource.



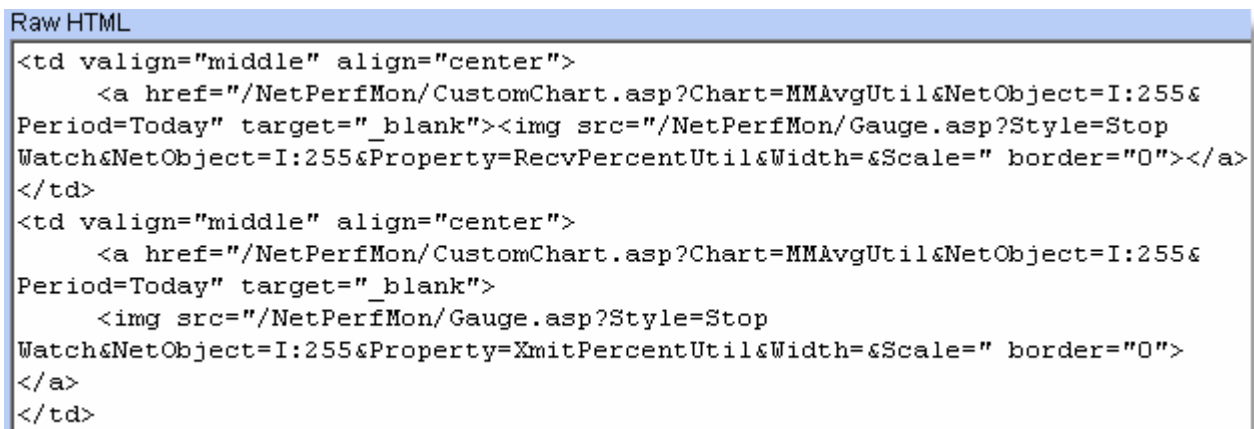
13. A new window is displayed showing the two Gauges. Right-click anywhere in the page and click **View Source**.



14. Copy the portion of the HTML that displays the Gauge or Chart. Ensure the portion that includes the **<img>** tags is selected.



15. Paste the copied section of HTML in the **Custom HTML or Text** window and then click the **Submit** button.



16. The Gauges are now displayed in the new **Gauges** View.

**SOLARWINDS.NET**  
Network Management Tools

Network Performance Monitor | Wireless Networks

Home | Top 10 | Events | Alerts | SysLog | OverView

### Gauges

**STRIDER - Intel(R) PRO/100**  
PERCENT UTILIZATION

RECV % Utilization | XMIT % Utilization

Custom HTML or Text

Custom HTML or Text

Custom HTML or Text

Custom HTML or Text

Custom HTML or Text

17. For a Percent Utilization Interface Chart, the sample code would look like:

![Screenshot of the 'Edit Custom HTML or Text' configuration page. It shows a form with 'Title' and 'Sub Title' fields, and a 'Raw HTML' field containing code for a chart. The title is 'STRIDER - Intel(R) PRO/100' and the subtitle is 'Percent Utilization - Chart'. The raw HTML code is: <td class=\\\](\\\"/NetPerfMon/Chart.asp?Chart=AVGUTIL&NetObject=I:78&Period=Today&SampleSize=30M&Style=\\\"Default\\\")

**Edit Custom HTML or Text**

Title  
STRIDER - Intel(R) PRO/100

Sub Title  
Percent Utilization - Chart

Raw HTML

```
<td class="ViewHeader" valign="middle" align="center">  
<a href="/NetPerfMon/CustomChart.asp?  
Chart=AVGUTIL&NetObject=I:78&Period=Today&SampleSize=30M&Style="Default"  
target="_blank">  
  
</a>  
</td>
```

18. Perform steps **9-15** for each additional Resource.

19. The **Gauges** View ends up looking like the following.



20. To add the **Gauges** View to a Menu Bar, refer to the **Editing Menu Bars Tutorial** at <http://www.solarwinds.net/Support/Orion/Tutorials.htm>.