

Replay 4

Install Guide

This Install Guide contains all the information you need to install Replay4. AppAssure recommends that you read through this guide and familiarize yourself with the contents. If you are experiencing problems with Replay, consult this guide before you contact Customer Support.



Copyright 2009 by AppAssure, Inc.

ALL RIGHTS RESERVED.

No part of this work covered by the copyright hereon may be reproduced or used in any form or by any means — graphic, electronic, or mechanical, including photocopying, recording, taping, Web distribution or information storage and retrieval systems — without the written permission of the publisher.

For permission to use material from this publication, contact

AppAssure Software, Inc.
1925 Isaac Newton Square, Suite 440

Reston, VA 20910
+1 703-547-8686
info@appassure.com

CONTENTS

Introduction.....	1
Replay 4 Installation Guide	1
Download Installation Kit.....	1
Replay 4.....	2
What is it?	2
Installation Components.....	2
Installing Replay 4.....	3
Installing the Replay Core Component.....	4
What is it?	4
Install the Replay Core	4
Installing the Replay Agent Component.....	13
What is it?	13
Install the Replay Agent	13
Installing the Boot CD Builder.....	22
What is it?	22
Install Procedure	22

INTRODUCTION

Replay 4 Installation Guide

This Install Guide contains all the information you need to install Replay 4.

AppAssure recommends that you read through this guide and familiarize yourself with the contents. If you are experiencing problems with Replay, consult this guide before you contact customer support.

Please follow the steps listed below to successfully perform a new installation of Replay 4. This guide should be used for new installations only. Please contact support for instructions on upgrading from previous versions.

Download Installation Kit

Download the latest release of Replay 4. You can download the installation from the AppAssure download site, www.appassure.com. The product located on the download site is a trial version. If you are a customer with a valid license key, please download from the support portal.

REPLAY 4

What is it?

Simply put, Replay 4 is the world's fastest way to recover from a server disruption; and the only disaster recovery solution with application-level recall for high pressure recovery scenarios.

A server-based, disk imaging solution, Replay 4 automatically and continuously snapshots your entire Windows application server. The Replay 4 products, including Replay for Windows, Replay for Exchange, Replay for SQL, and Replay for Hyper-V, are keenly application-aware and enable automated backup validation and object-level restore functionality.

When paired with distributed Replay Cores installed in virtual or physical servers, Replay 4 creates a heart and lung by-pass machine for your mission-critical systems, making them available when and where you need them most.

What does that mean for you? Well, for one, it means your business will never lose another dime in lost productivity due to down servers. Our unique approach to backup combines the best features of the top imaging, replication, and deduplication software on the market today offering a 3-for-1 solution that guarantees continuous recovery-testing, seamless disaster recovery, always-on high availability, and significantly reduced storage costs.

Installation Components

Replay 4 consists of 3 components:

Replay Cores - Cores process backups, validates application integrity, compresses and deduplicates snapshots and replicates them over the WAN to a remote disaster recovery site. Cores can be local to the server being protected or distributed throughout the network enabling a flexible and scalable backup and disaster recovery configuration.

Replay Agents – Agents are installed on each the protected server or on Hyper-V hosts. It's responsible for capturing block-level changes on the server and sending them a Relay Core. A core can manage 1 to many agents. It also handles restores and server rollbacks.

Replay Admin Console – An enterprise console that centrally manages the Replay 4 environment.

INSTALLING REPLAY 4

Run the downloaded Replay4-Trial-<version>.exe file. The file is a self-extracting zip file; there is no need to extract files prior to running the installation. You will be presented with the following screen:



Figure 1

For single server configurations, select the “**Install Replay 4**” button to install all of the components on a Windows Server 2008 R2, Windows Server 2008, Windows Server 2003, Windows 7, Vista or Hyper-V host.

Please skip to the Installing the Boot CD Builder.

INSTALLING THE REPLAY CORE COMPONENT

What is it?

The Replay Core is the component of Replay that processes the backups, compresses and deduplicates the snapshots and replicates them over the WAN to a remote disaster recovery site. Cores can be local to the server being protected or distributed throughout the network enabling a flexible and scalable backup and disaster recovery configuration.

Install the Replay Core

When installing Replay 4 in a distributed environment, install the Replay Core first on any Windows Server 2008 R2, Windows Server 2008, Windows Server 2003, Windows 7, Vista or Hyper-V host. The core is supported on virtual and physical environments.



Figure 2

1. Click the “**Install Replay Core**” button. If there are any prerequisites required for the Replay Core installation, click Install on each prerequisite that requires it. Once complete, click **Next**.

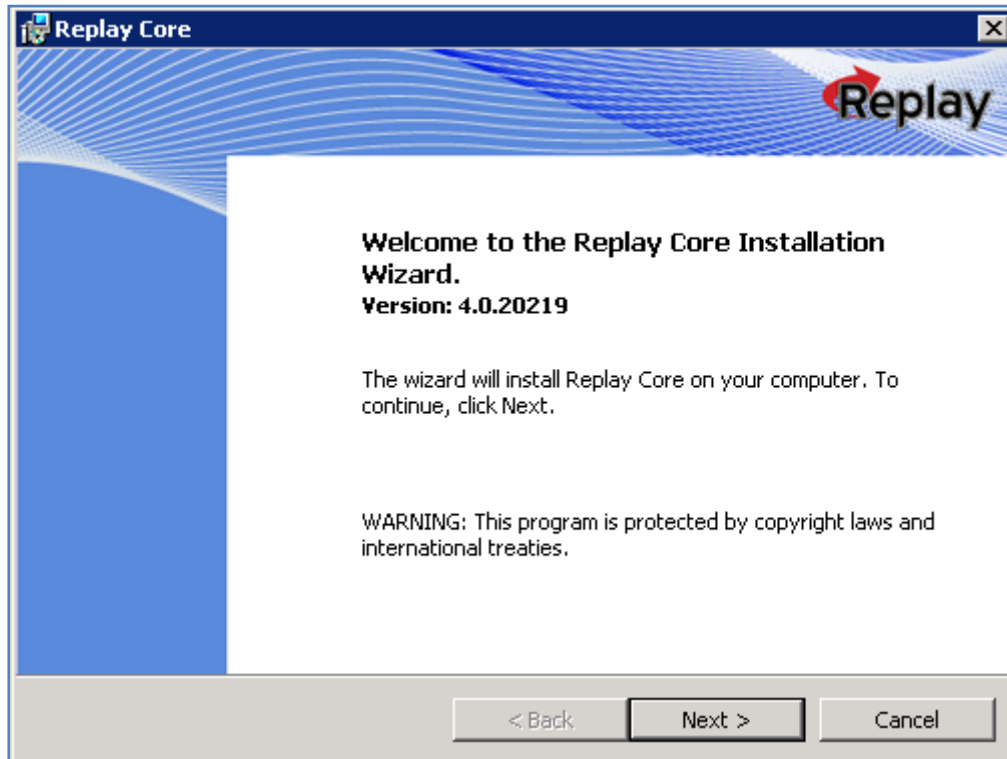


Figure 3

2. At the Welcome screen, click the **Next** button.



Figure 4

3. Click the **"I accept the terms in the license agreement"** radio button. If you do not, you will not be able to proceed with the install. Once you have selected the correct button, click **Next**.

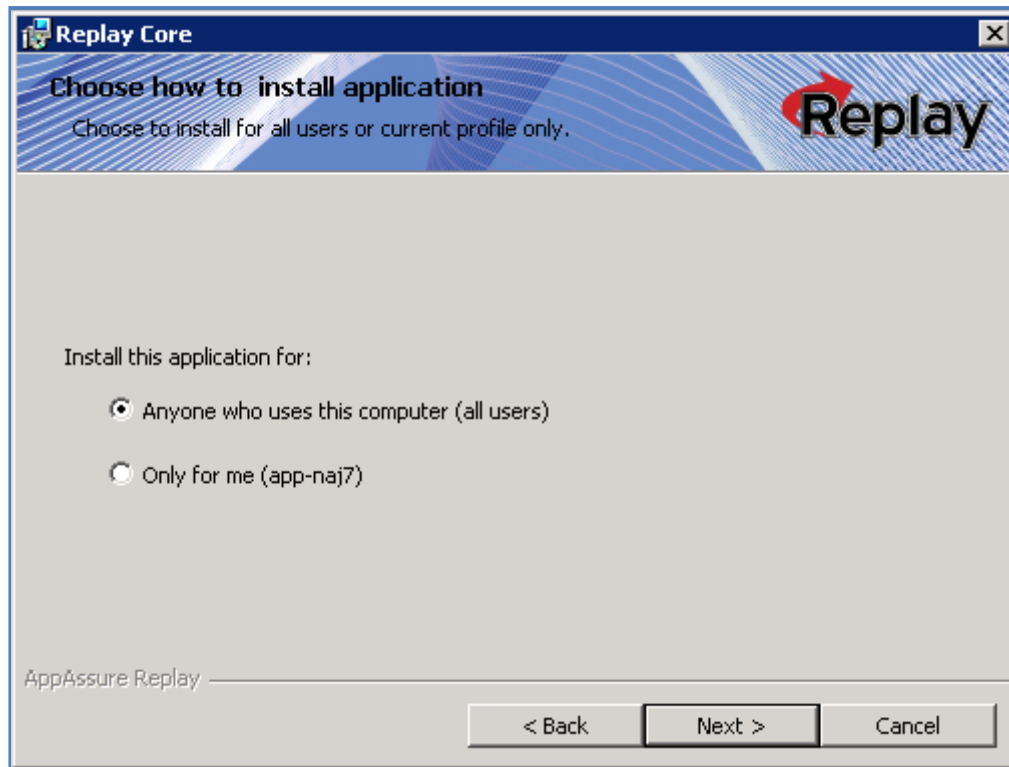


Figure 5

4. Select who can use the application. The default is anyone who uses this computer.
5. Click the button for “**Browse for Key**” and browse to the location where you staged your license key. We suggest you select the option for installing the application for anyone who uses this computer, unless your company’s security policy prevents this.
6. Once you’ve loaded your license key and selected the correct user option, click **Next**.
7. In the next window, confirm that your license key information is correct and click **Next**.

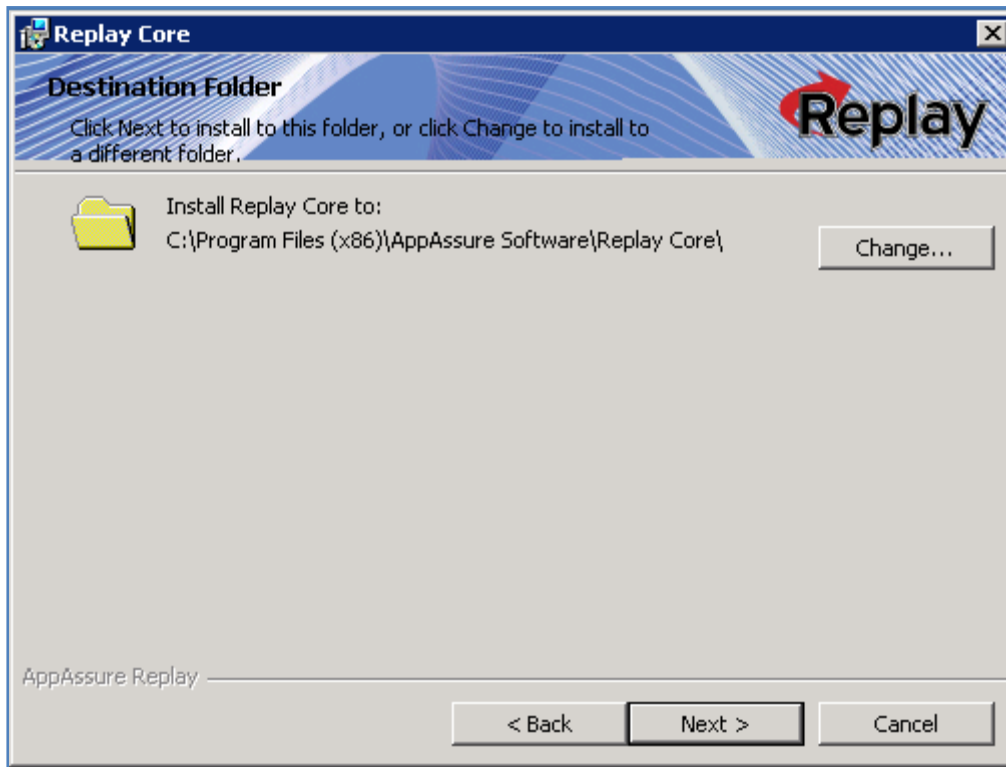


Figure 6

8. You can accept the default installation location for Replay 4, or choose a different location. We suggest you accept the default location. Click the **Next** button.

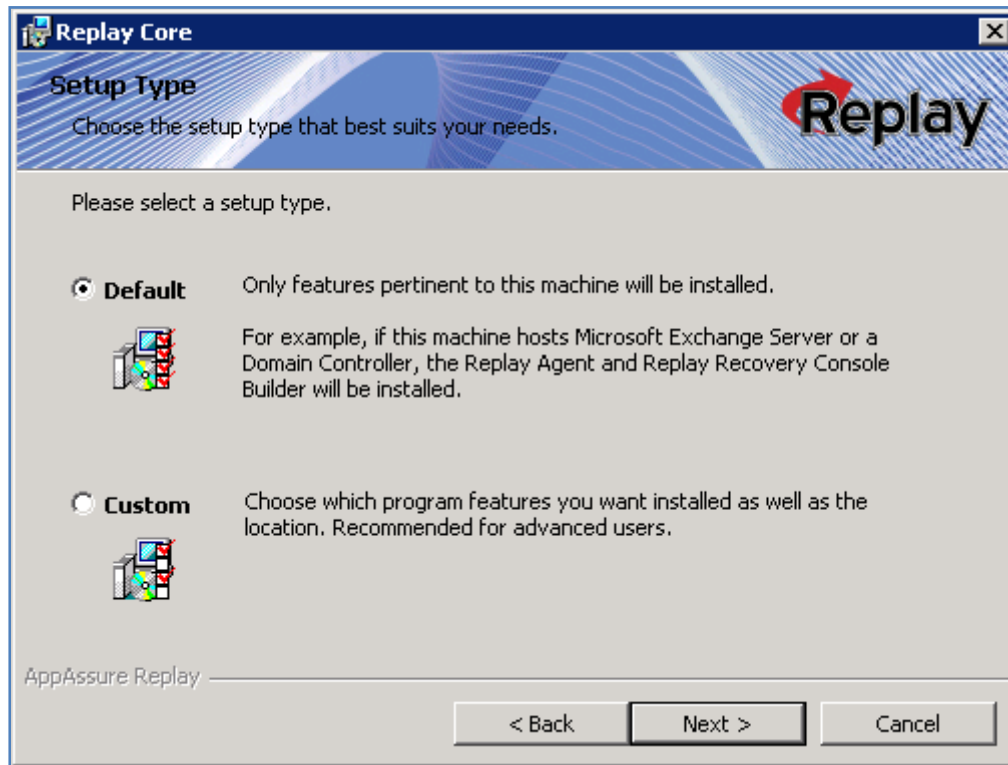


Figure 7

9. Leave the Setup Type as Default and click **Next**, or select Custom if you wish to choose your setup options. The default option will install the Replay Core and Replay Admin Console components. Select Custom to select which component to install.

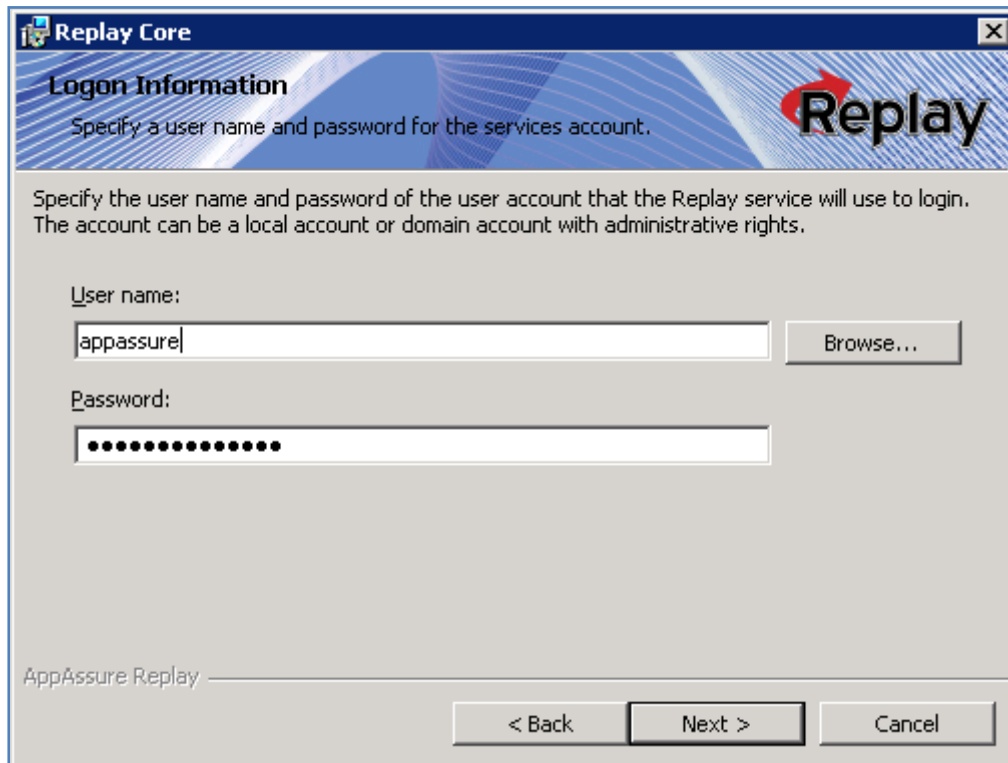


Figure 8

10. Specify the username and password of the user account that Replay will utilize in the user name window. The account may be in a user name or DOMAIN\user name form. Type in the user names' password in the window below User name, and click **Next**. The user must be a member of the local domain admin group. For SQL Server, the user for the service must also have the sysadmin role, in order to perform attachability checks.

- You can click Browse to navigate to the correct domain and username if desired.
- Click **Next** once you have entered the correct username and password.

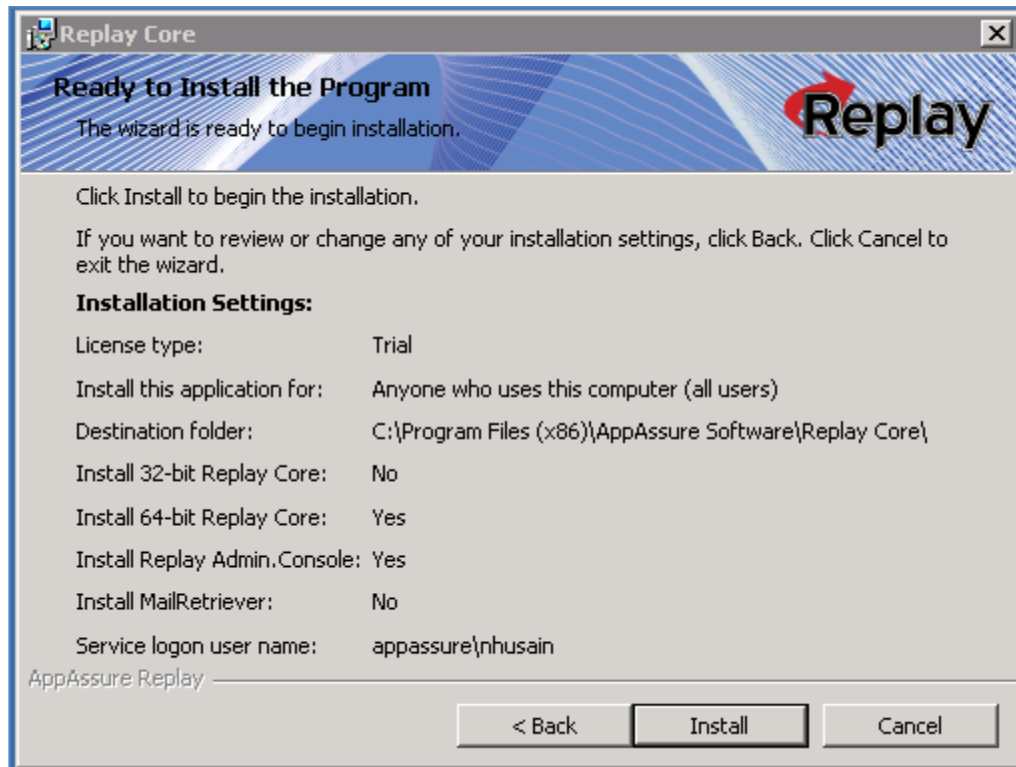


Figure 9

11. Click **Install** to begin the installation. The installation may take several minutes.



Figure 10

12. Click **Finish** once the install has successfully completed.

INSTALLING THE REPLAY AGENT COMPONENT

What is it?

The Replay Agent is a small agent that resides on the protected server. The protected server **MUST** be rebooted after an agent installation. If this is a production application server, please ensure you schedule your agent installation during a timeframe where you can safely reboot your protected server.

Install the Replay Agent

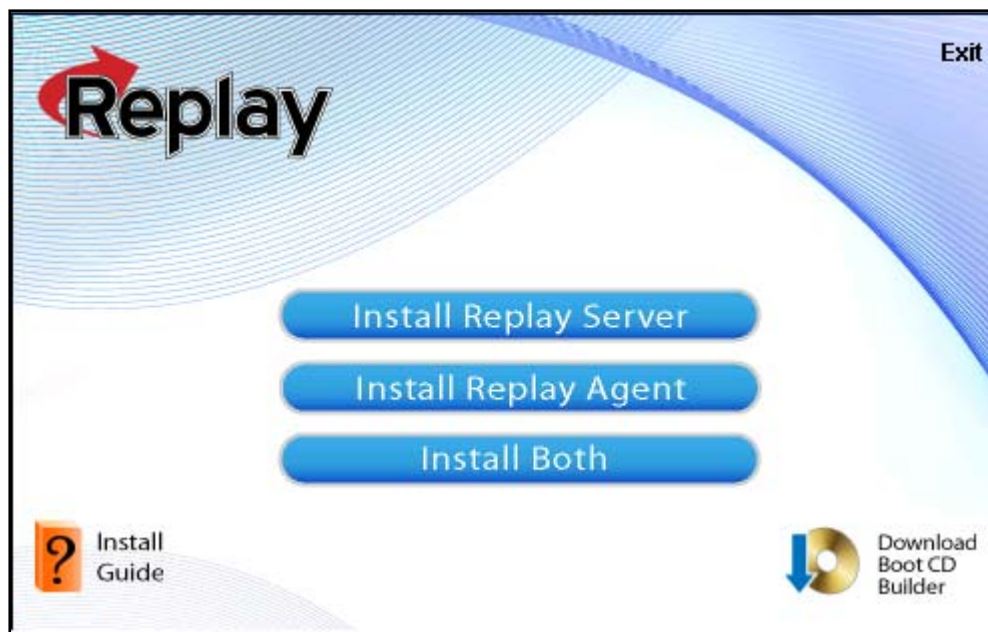


Figure 11

1. Click "**Install Replay Agent**".
2. If there are any prerequisites that need to be installed, a prerequisites screen will be presented. Click Install on each prerequisite that needs to be installed and ensure the installation successfully completes. Once done, click **Next**.

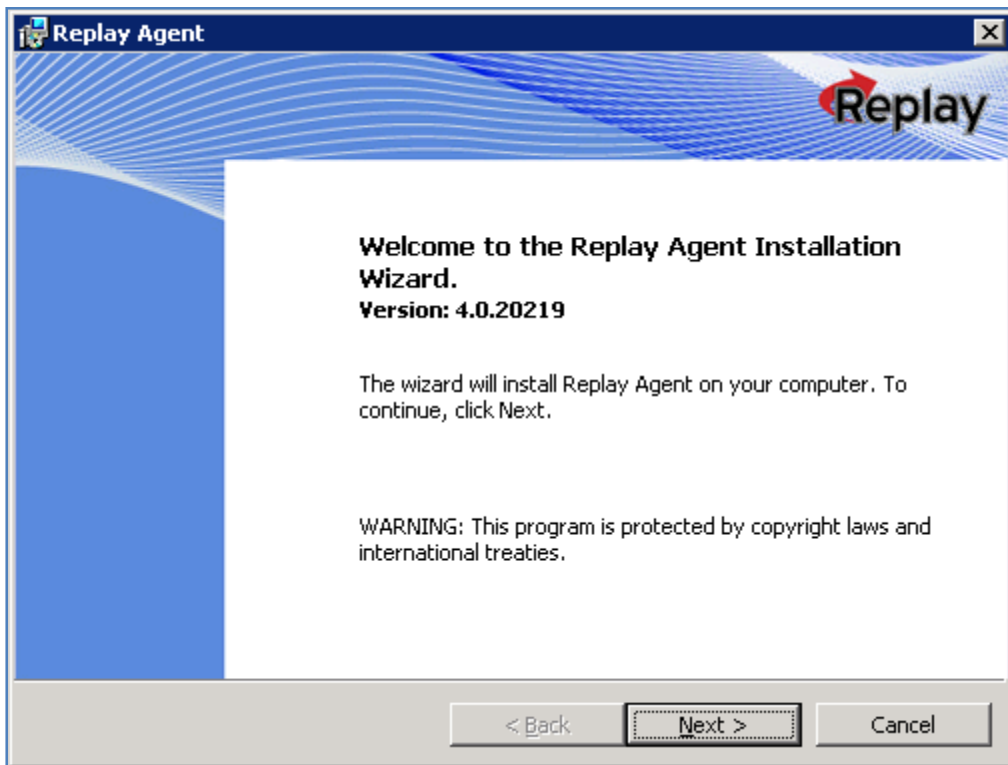


Figure 12

3. At the Welcome screen, click the **Next** button.

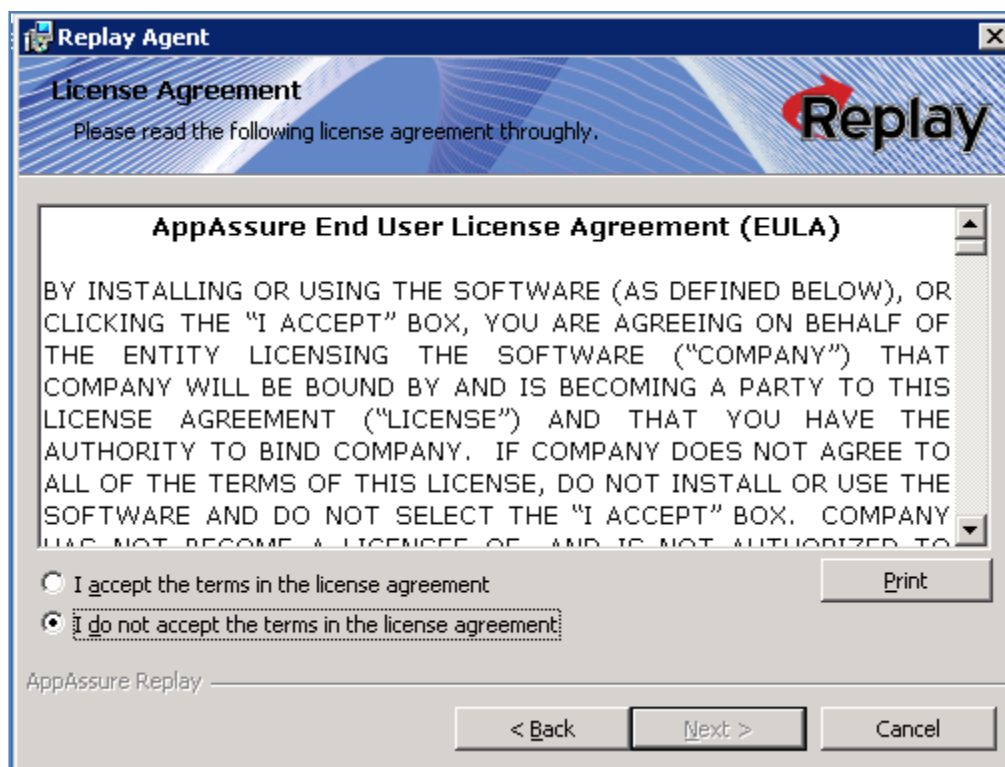


Figure 13

4. Click the **"I accept the terms in the license agreement"** radio button. If you do not, you will not be able to proceed with the install. Once you have selected the correct button, click **Next**.

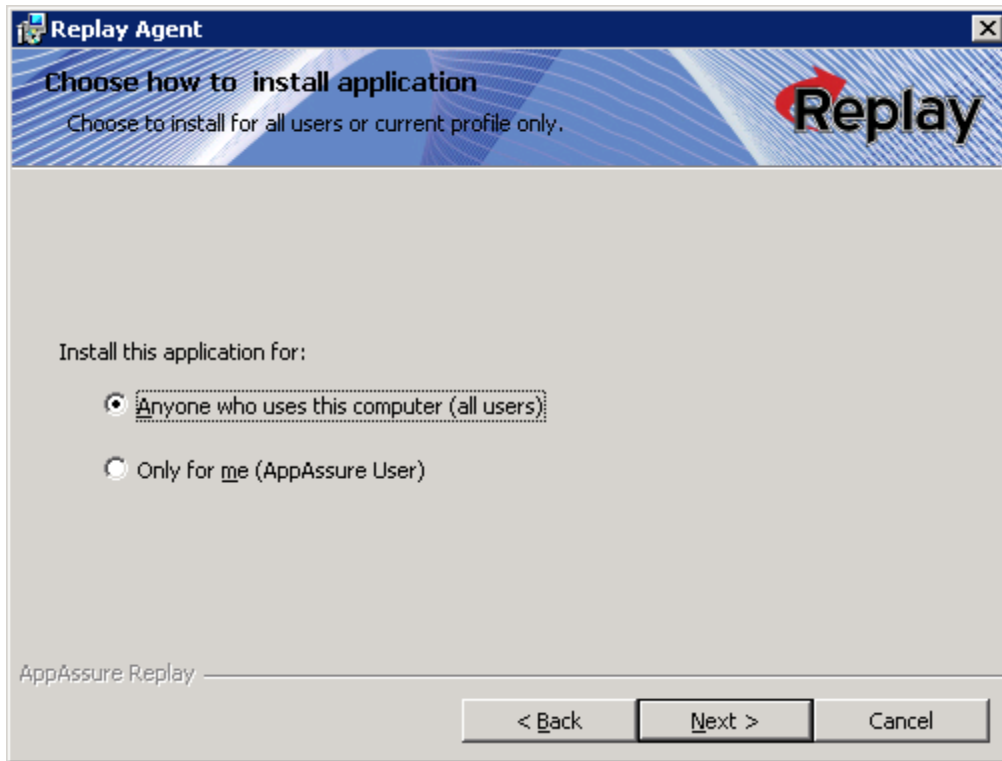


Figure 14

5. Select who can access the application. The default is anyone who uses this computer.
6. Click the button for “**Browse for Key**” and browse to the location where you staged your license key. We suggest you select the option for installing the application for anyone who uses this computer, unless your company’s security policy prevents this. Once you’ve loaded your license key and selected the correct user option, click **Next**.
7. Confirm that your license key information is correct, and click **Next**.

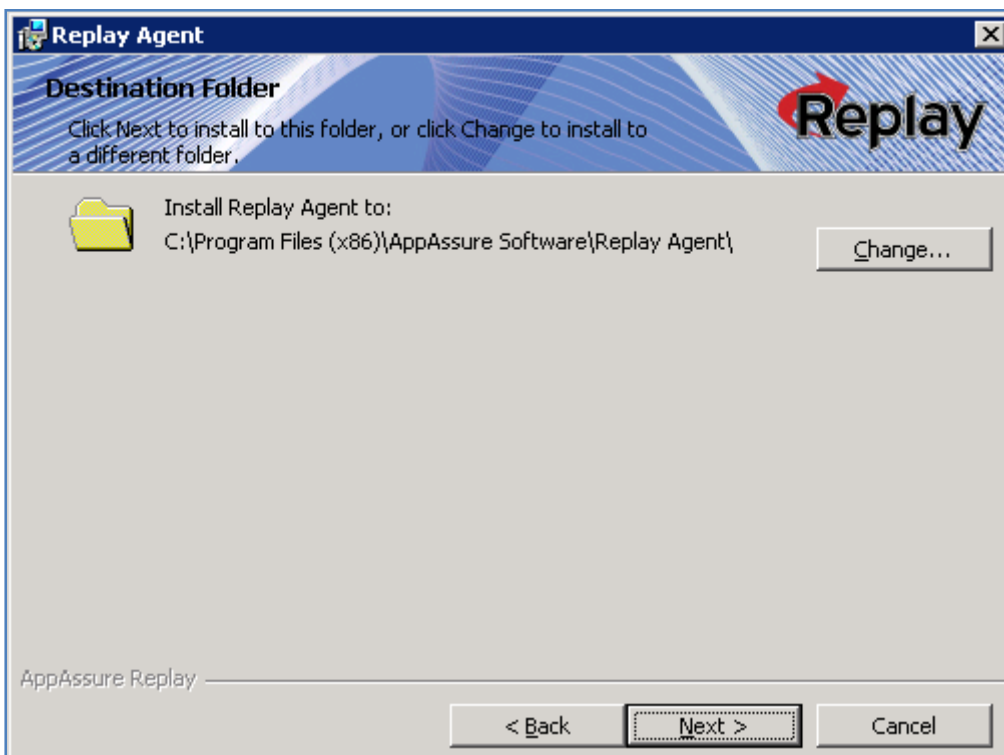


Figure 15

8. You can accept the default installation location for Replay 4, or choose a different location. We suggest you accept the default location. Click **Next** once you have specified the installation location.

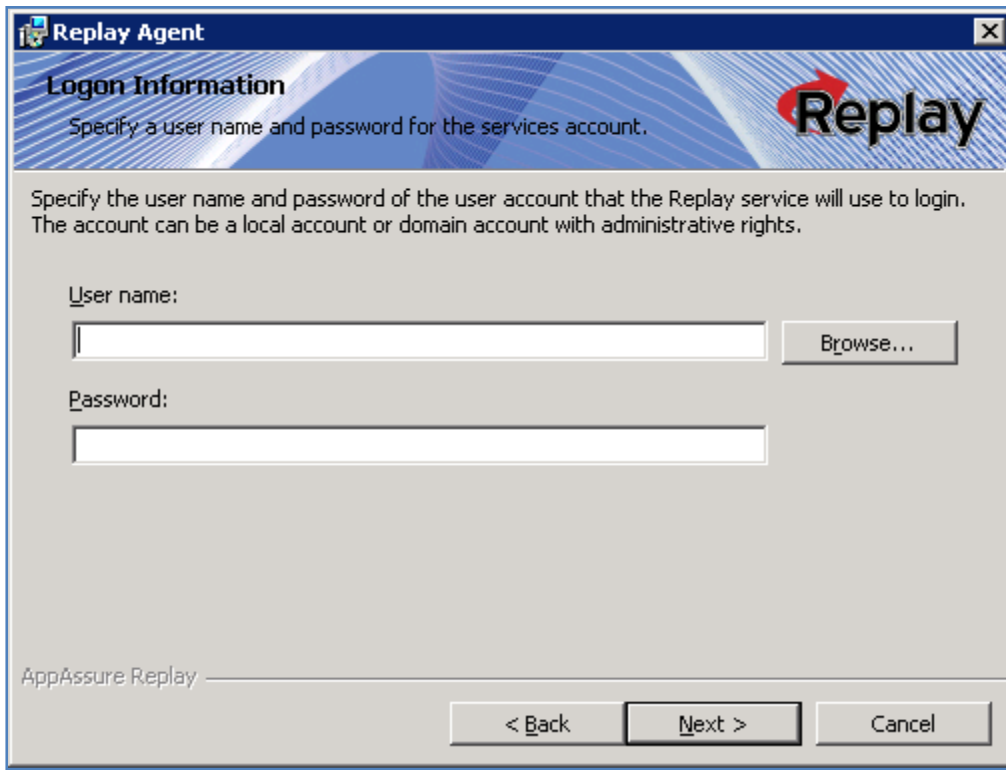


Figure 16

9. Specify the user name and password of the user account that Replay will utilize in the user name window. This account can be in a user name or DOMAIN\user name form. Type in the user name's password in the window below user name, and click **Next**.
10. You can click Browse to navigate to the correct domain and username if desired. Click **Next** once you have entered the correct username and password.

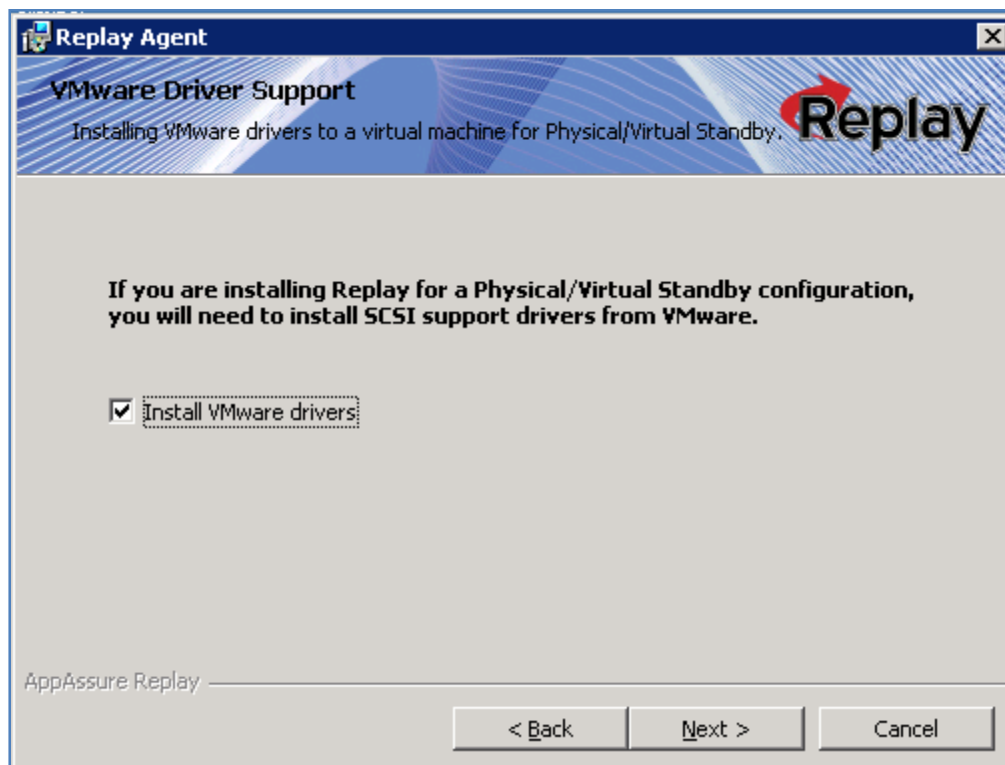


Figure 17

11. **IMPORTANT:** if you plan on utilizing Export to ESX or Virtual Machine, select the checkbox to Install VMWare Drivers, and click **Next**.

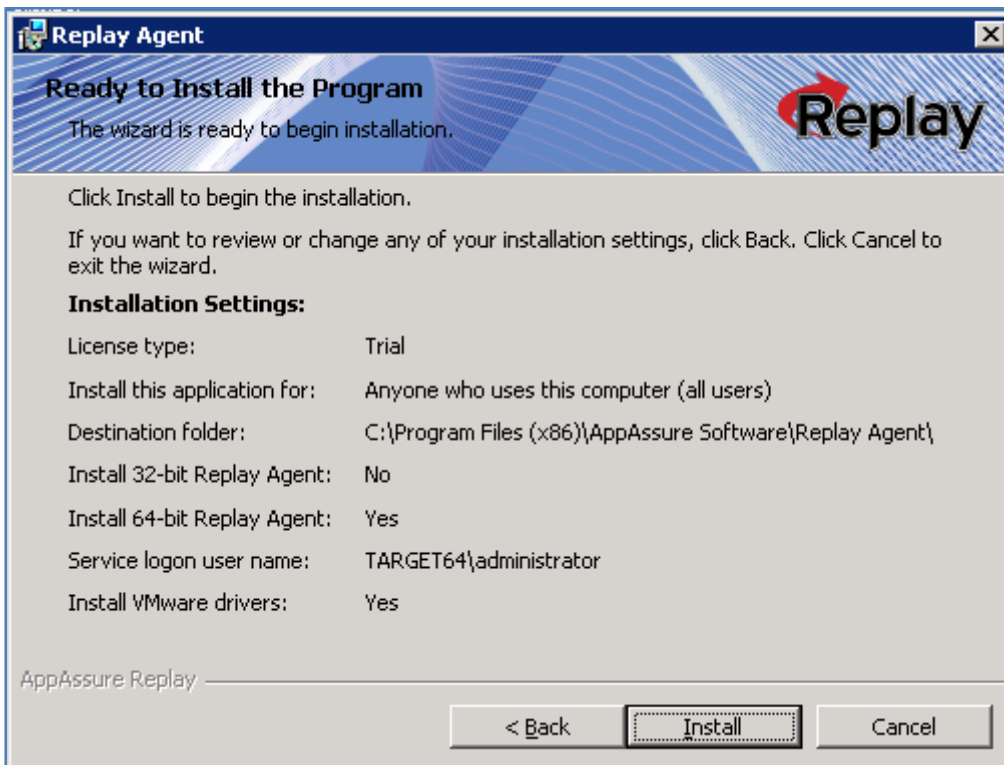


Figure 18

12. Click **Install** to begin the installation. The installation may take several minutes.



Figure 19

13. Click **Finish** when the install wizard completes.

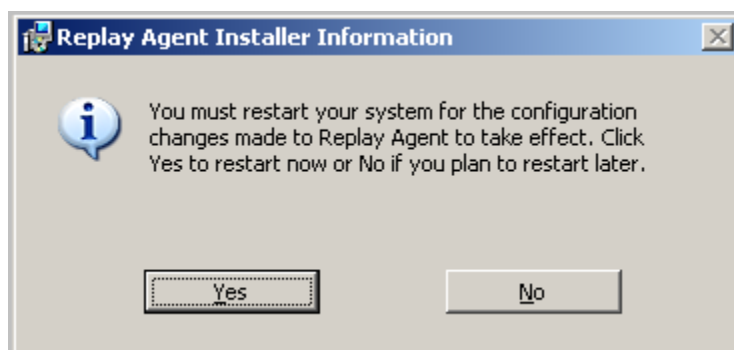


Figure 20

14. Click **Yes** when prompted to restart your system, or click **No** if you plan to restart later. We recommend you click **Yes** to restart your system at this time.

INSTALLING THE BOOT CD BUILDER

What is it?

The Boot CD Builder (BCB) is a bootable environment that is used to rollback the system drive or the entire server to the original location or to a new location.

The BCB is created by building a bootable ISO image that is tailored to the machine that it is supporting, i.e. contains the correct network and mass storage drivers. The RRC can be booted from a CD or optionally as a boot entry in the boot.ini file.

Install Procedure

Once you completed the installation of the Agent and after the agent is rebooted, we strongly recommend you install the Replay Recovery Builder tool. To do this, launch the Replay EXE file again, and click the **Download Boot CD Builder** icon on the main Install page. From there, click the link to download the Boot CD Builder install.



Figure 21



Figure 20

1. Click the "Install Boot CD Builder" button.

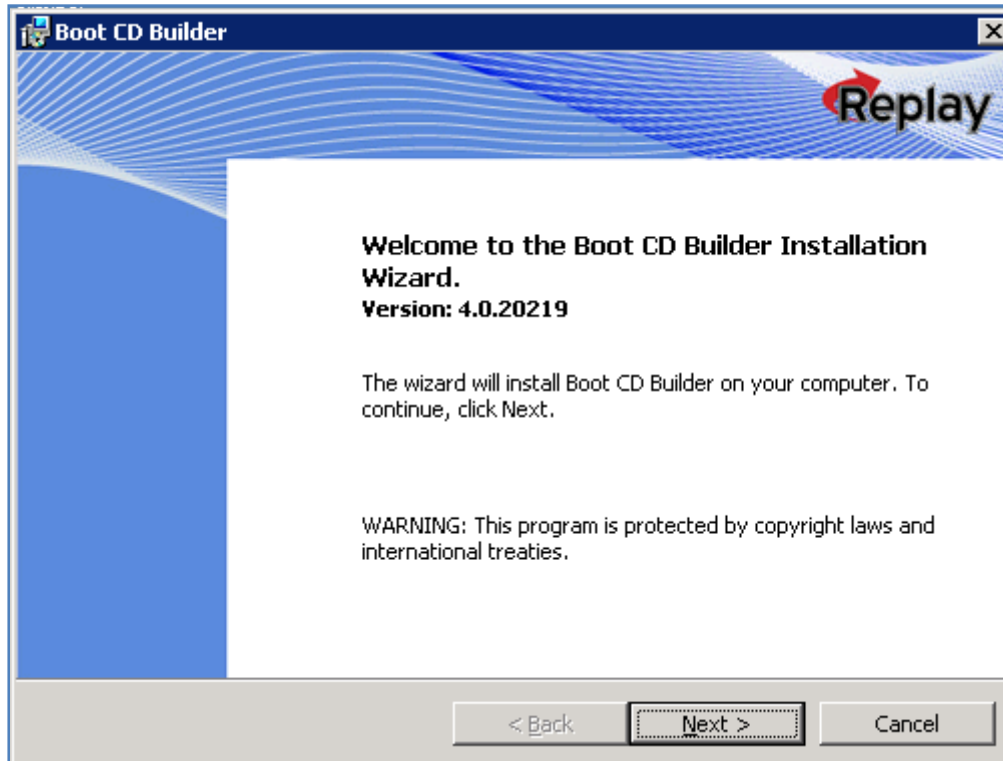


Figure 22

2. Click **Next** to continue.

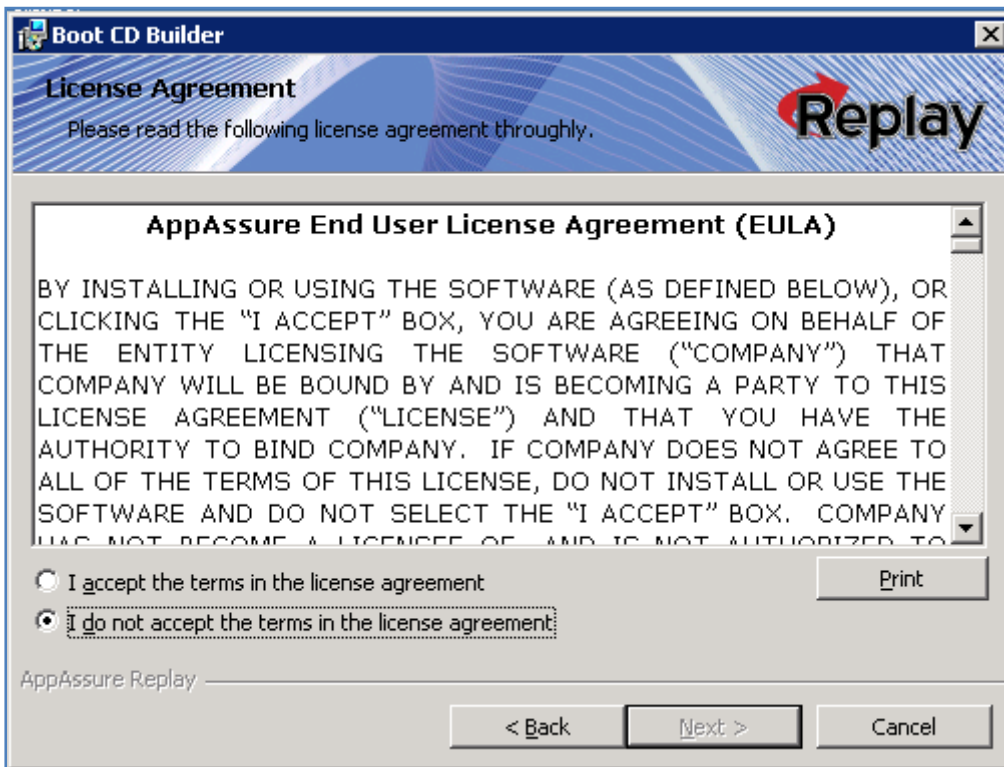


Figure 23

3. Click the **"I accept the terms in the license agreement"** radio button. If you do not, you will not be able to proceed with the install. Once you have selected the correct button, click **Next**.



Figure 24

4. We suggest you select the option for installing the application for anyone who uses this computer, unless your company's security policy prevents this. Once you've selected the correct user option, click **Next**.



Figure 25

5. Select the Destination folder and click **Next**.

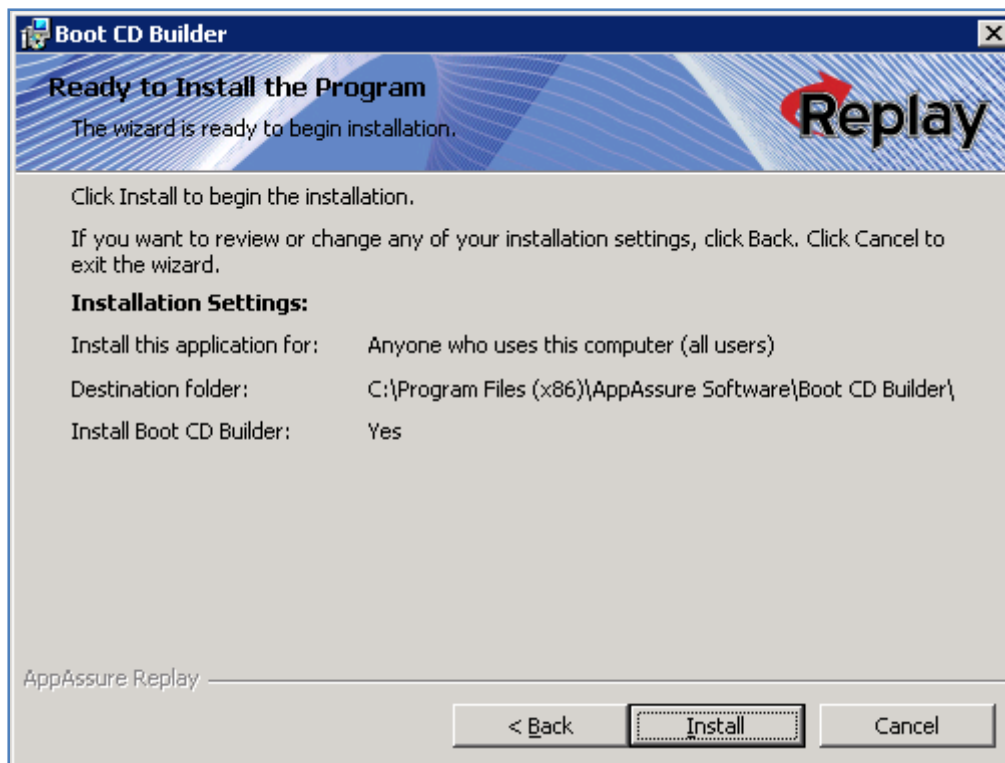


Figure 26

6. A summary of what is to be installed is described on this page. Click the **Install** button.

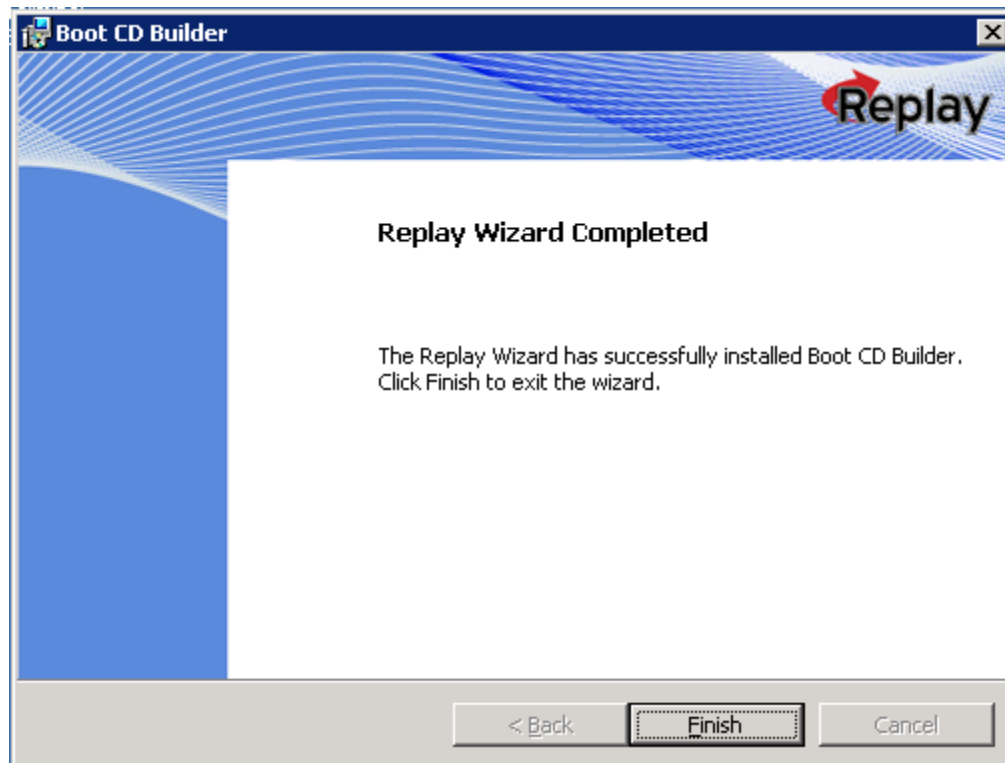


Figure 27

7. Click the **Finish** button when the install completes.

You do NOT need to reboot your protected server once this step has completed.

This completes the Replay 4 installation process. Please see our online Knowledgebase for further instructions on how to add your protected servers to your Replay 4 environment.